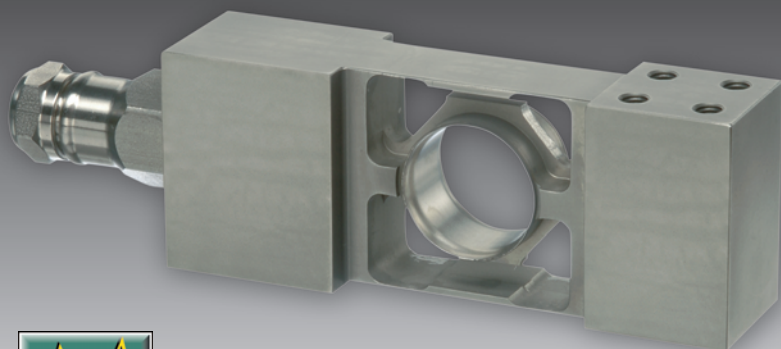




MP 55

Stainless Steel Single Point Load Cell



11kg... 200kg Type C3MR, C3MR+, C4

- Full stainless steel construction
- Hermetically welded seal (IP68, IP69K)
- Approved to OIML R60
- Ex-Version available (MP55/...E)
- High Input Impedance
- Single Point platform (max. size see table)
- Integrated Mounting spacer

Applications

- Bench Scales
- Counting Scales
- Check Weighing Systems

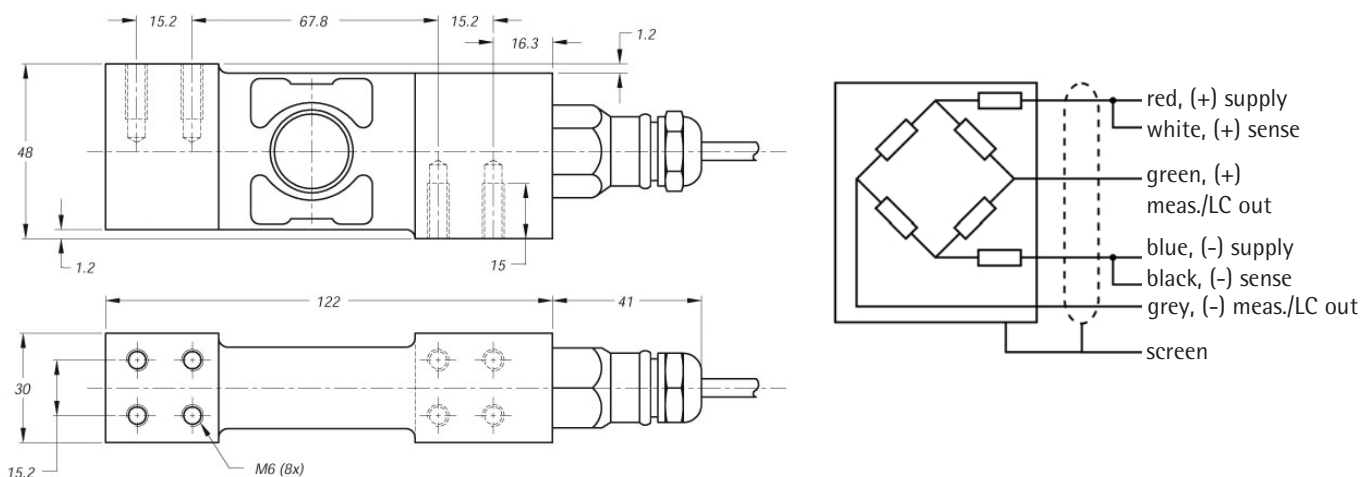
Technical Data		C3MR	C3MR+	C4	
Accuracy class		0.02	0.02	0.018	% E_{max}
Maximum capacity	E_{max}	s. table	s. table	s. table	
Max. usable load	E_u	200	200	200	% E_{max}
Destructive load	E_d	> 300	> 300	> 300	% E_{max}
Safe side load	E_{iq}	100	100	100	% E_{max}
Minimum LC verification interval $v_{min} = E_{max} / Y$	Y	10,000	20,000	20,000	
Rated output	C_n	2.0	2.0	2.0	mV/V
Tolerance on rated output	d_c	≤ 5.0	≤ 5.0	≤ 5.0	% C_n
Zero output signal	S_{min}	≤ 5.0	≤ 5.0	≤ 5.0	% C_n
Creep, during 30min.	d_{cr}	≤ 0.016	≤ 0.016	≤ 0.012	% C_n
Temperature effect on S_{min}	TK_{Smin}	≤ 0.012	≤ 0.006	≤ 0.006	% $C_n/10K$
Temperature effect on C	TK_C	≤ 0.010	≤ 0.010	≤ 0.008	% $C_n/10K$
Input impedance	R_{LC}	1100 ± 50	1100 ± 50	1100 ± 50	Ω
Output impedance	R_o	960 ± 50	960 ± 50	960 ± 50	Ω
Insulation impedance	R_{IS}	> 5,000	> 5,000	> 5,000	MΩ
Recommended supply voltage	B_u	5... 15	5... 15	5... 15	V
Maximum supply voltage	U_{max}	15	15	15	V

По вопросам продаж и поддержки обращайтесь:

Астана+7(7172)727-132, Волгоград(844)278-03-48, Воронеж(473)204-51-73, Екатеринбург(343)384-55-89,
 Казань(843)206-01-48, Краснодар(861)203-40-90, Красноярск(391)204-63-61, Москва(495)268-04-70,
 Нижний Новгород(831)429-08-12, Новосибирск(383)227-86-73, Ростов-на-Дону(863)308-18-15, Самара(846)206-03-16,
 Санкт-Петербург(812)309-46-40, Саратов(845)249-38-78, Уфа(347)229-48-12

Technical Data		C3MR	C3MR+	C4	
Nominal ambient temperature range	B _T	-10 to + 40	-10 to + 40	-10 to + 40	° C
Usable ambient temperature range	B _{TU}	-40 to +80	-40 to +80	-40 to +80	° C
Nominal deflection	S _{nom}	ca. 0.17... 0.25	ca. 0.17... 0.25	ca. 0.17... 0.25	mm
Cable length		3.5	3.5	3.5	m
Environmental protection		IP68, IP69K	IP68, IP69K	IP68, IP69K	

The technical data given here serve only as a product description and must not be interpreted as guaranteed characteristics in the legal sense.



Order information

Type	Order number	Type	Order number	Max. capacity E _{max}	Max. platform size
MP55/11Kg C3MR	9408 255 07011	MP55/11Kg C3MRE	9408 655 07011	11kg	350mm x 350mm
MP55/22Kg C3MR	9408 255 07022	MP55/22Kg C3MRE	9408 655 07022	22kg	350mm x 350mm
MP55/50Kg C3MR	9408 255 07050	MP55/50Kg C3MRE	9408 655 07050	50kg	450mm x 450mm
MP55/100Kg C3MR	9408 255 07110	MP55/100Kg C3MRE	9408 655 07110	100kg	600mm x 600mm
MP55/200Kg C3MR	9408 255 07120	MP55/200Kg C3MRE	9408 655 07120	200kg	600mm x 600mm
MP55/11Kg C3MR+	9408 255 08011	MP55/11Kg C3MR+E	9408 655 08011		
MP55/22Kg C3MR+	9408 255 08022	MP55/22Kg C3MR+E	9408 655 08022		
MP55/50Kg C3MR+	9408 255 08050	MP55/50Kg C3MR+E	9408 655 08050		
MP55/100Kg C3MR+	9408 255 08110	MP55/100Kg C3MR+E	9408 655 08110		
MP55/200Kg C3MR+	9408 255 08120	MP55/200Kg C3MR+E	9408 655 08120		
MP55/11Kg C4	9408 255 04011	MP55/11Kg C4E	9408 655 04011		
MP55/22Kg C4	9408 255 04022	MP55/22Kg C4E	9408 655 04022		
MP55/50Kg C4	9408 255 04050	MP55/50Kg C4E	9408 655 04050		
MP55/100Kg C4	9408 255 04110	MP55/100Kg C4E	9408 655 04110		
MP55/200Kg C4	9408 255 04120	MP55/200Kg C4E	9408 655 04120		

Certificate of conformity

Feature: II 1G and 1D EEx ia IIC T6|T5|T4 130°C, II 1D IP65 T 130°C

Reg. Number: KEMA 04ATEX 1253x

По вопросам продаж и поддержки обращайтесь:

Астана+7(7172)727-132, Волгоград(844)278-03-48, Воронеж(473)204-51-73, Екатеринбург(343)384-55-89,
 Казань(843)206-01-48, Краснодар(861)203-40-90, Красноярск(391)204-63-61, Москва(495)268-04-70,
 Нижний Новгород(831)429-08-12, Новосибирск(383)227-86-73, Ростов-на-Дону(863)308-18-15, Самара(846)206-03-16,
 Санкт-Петербург(812)309-46-40, Саратов(845)249-38-78, Уфа(347)229-48-12

sst@nt-rt.ru || sartorius.nt-rt.ru